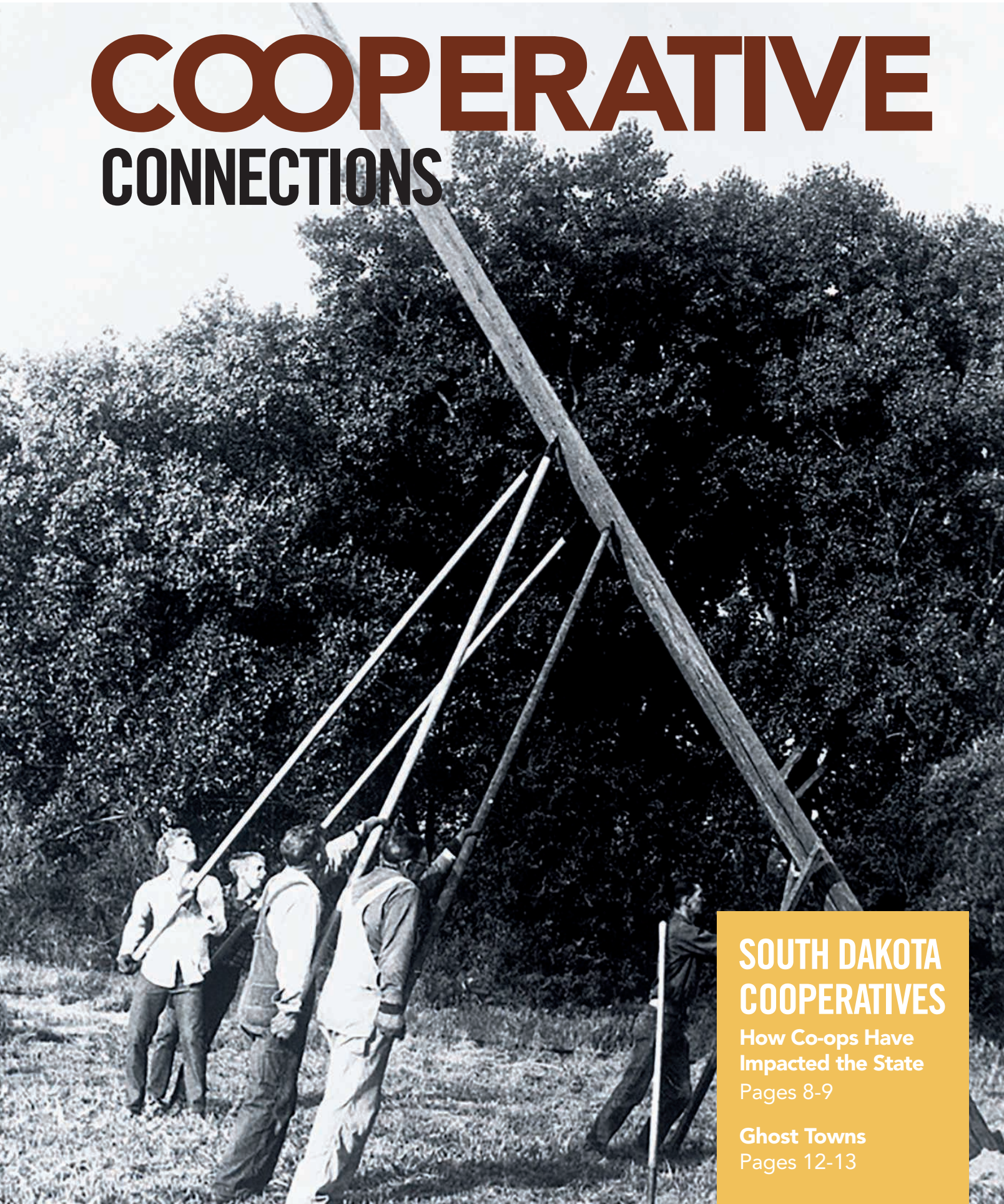




A Touchstone Energy® Cooperative 

**DAKOTA ENERGY**  
OCTOBER 2024 VOL. 25 NO. 6

# COOPERATIVE CONNECTIONS



## **SOUTH DAKOTA COOPERATIVES**

**How Co-ops Have  
Impacted the State**  
Pages 8-9

**Ghost Towns**  
Pages 12-13



Panel members (l-r): Chris Baumgartner, Basin Electric Sr. Vice President, Member & External Relations, Bob Sahr, East River Electric CEO/General Manager, Chad Felderman, DEC CEO/General Manager, Board President Darrell Raschke, Directors Tommy Baruth and Brian Baum

## Another Successful Annual Meeting in 2024

Dakota Energy's 2024 Annual Meeting was held on August 22 via teleconference in Huron, Miller, and Highmore. Members were able to attend in person or drive-thru to cast their vote.

Two members filed a petition for the Beadle Area director position, with 300 votes cast and Daniel Langbehn securing the position.

The Ree Area directors had two positions open. James D. (JD) Wangsness petitioned for one of the positions. Wangsness was approved by unanimous motion. The other Ree Area director position is currently vacant due to no petitions being filed. We extend our congratulations to Langbehn and Wangsness.

A question and answer session was held after the election, with a panel comprising of Chris Baumgartner, Basin Electric Sr. Vice President, Member & External Relations, Bob Sahr, East River Electric CEO/General Manager, Chad Felderman,



The Credentials and Election Committee members in Huron, Miller, and Highmore counted the ballots and reported the results of the Beadle Area director election.

Dakota Energy CEO/General Manager, Dakota Energy Board President Darrell Raschke, Directors Tommy Baruth and Brian Baum.

The discussion covered important topics such as rates, FERC ruling against Basin Electric by FERC judge, whether the cost of Dakota

Gasification Company can be included in Basin member rates, and the possibility of having nine districts versus the current two districts to better represent the whole service territory.

## COOPERATIVE CONNECTIONS

**DAKOTA  
ENERGY**

(USPS No. 018-949)

**Board President:** Darrell Raschke, Huron

**Board of Directors**

Nick Nemec, Holabird - Vice President  
Tommy Baruth, Alpena - Secretary  
Brian Bonebright, Wessington - Treasurer  
Brian Baum, Alpena  
Daniel Langbehn, Huron  
Doug Schaefer, Orient  
James Wangness, Miller

**CEO/General Manager:** Chad Felderman

**Manager of Operations:** Matt Zomer

**Manager of Finance & Administration:**  
Eric Hasart

**Manager of Human Resources &  
Communications:** Jodene Decker

**Manager of Member Services:** Jeff Gilbert

Dakota Energy Cooperative Connections is the monthly publication for the members of Dakota Energy Cooperative, PO Box 830, 40294 US Hwy 14, Huron, SD 57350. Members subscribe to Cooperative Connections as part of their electric cooperative membership. The purpose of Dakota Energy Cooperative Connections is to provide reliable, helpful information to electric cooperative members on electric cooperative matters and better rural living.

**Subscription information:** Dakota Energy Cooperative members devote 50 cents from their monthly electric payments for a subscription. Non-member subscriptions are available for \$12 annually. USPS No. 0819-949 Periodicals Postage Paid at Huron, SD 57350. Postmaster: Please send address changes to Dakota Energy Cooperative Connections, PO Box 830, Huron, SD 57350; telephone (605) 352-8591; fax (605) 524-7064; email dakotaenergy@dakotaenergy.coop

This institution is an equal opportunity provider and employer.

www.dakotaenergy.com  
Facebook @dakotaenergy  
Twitter @DakotaEC



# U DRIVE. U TEXT. U PAY.

## DON'T DRIVE DISTRACTED

For your safety and the safety of roadside crews, other drivers, pedestrians, bicyclists and motorcyclists, do not drive distracted. Put all your attention on driving, and the rest can wait. As the National Highway Traffic Safety Administration (NHTSA) promotes in its safety campaign, "U Drive. U Text. U Pay."

### DISTRACTED DRIVING CRASH STATISTICS ON U.S. ROADS:

- Nine people die each day in crashes that are reported to involve a distracted driver.
- Distracted driving claimed 3,522 lives in 2021.
- Texting diverts attention from driving for approximately 5 seconds. At 55 mph, that's enough time to travel the length of a football field.
- Many states have laws against texting, talking on the phone and other distractions while driving.

### THERE ARE THREE TYPES OF DRIVING DISTRACTIONS:

1. Visual, when you take your eyes off the road.
2. Manual, when you take your hands off the wheel.
3. Cognitive, when you take your mind off driving.

*Distracted driving is preventable. Use apps to help you avoid using your cell phone and do not multitask while driving.*

Sources: NHTSA, CDC

Learn more at:  
**Safe Electricity.org**<sup>®</sup>

# FIRE SAFETY

Cooking and heating are the leading causes of home fires and fire injuries, and winter months are the peak time for fire-related deaths. **Fire Prevention Week (Oct. 6-12, 2024)** is the perfect time to review and practice fire safety.

### Minimize Your Risks

The good news: Deaths from home fires in the U.S. have trended downward since the 1970s, according to Injury Facts, but even one death from a preventable fire is too many. While fire doesn't discriminate by age, it is the third leading cause of death for children 1 to 14.

**When cooking, make fire safety a priority by keeping these tips in mind:**

- Be alert; if you are sleepy or have consumed alcohol, don't use the oven or stovetop.
- Stay in the kitchen while you are frying, grilling, boiling or broiling food.
- Keep anything that can catch fire away from your stovetop.

**Heating is the second leading cause of home fires. Follow these tips:**

- Keep all flammables, like paper, clothing, bedding, drapes or rugs, at least three feet from a space heater, stove or fireplace.
- Never leave portable heaters and fireplaces unattended; turn off heaters and make sure fireplace embers are extinguished before leaving the room.
- If you must use a space heater, place it on a level, nonflammable surface, like ceramic tile, not on a rug or carpet.
- Keep children and pets away from space heaters.
- When buying a space heater, look for models that shut off automatically if the heater falls over.

### Working Smoke Alarms Are a Must

About three out of five fire deaths happen in homes without working smoke alarms. Smoke alarms are a key part of a home fire escape plan providing early warning to reduce your risk of dying in a fire. The National Fire Protection Association recommends you:

- Install smoke alarms on every level of your home, inside bedrooms and outside sleeping areas on the ceiling or high on the wall.
- Keep smoke alarms away from the kitchen, at least 10 feet from the stove, to reduce false alarms.
- Use special alarms with strobe lights and bed shakers for

- people who are hard of hearing or deaf.
- Test smoke alarms monthly.
- Replace batteries in your smoke alarm and carbon monoxide detector annually.
- Replace smoke alarms that are 10 or more years old.

### When and How to Use a Fire Extinguisher

Always put your safety first; if you are not confident in your ability to use a fire extinguisher, get out and call 9-1-1. The American Red Cross cautions you to evaluate the situation and ensure:

- Everyone has left or is leaving the home
- The fire department has been called
- The fire is small, not spreading, and there is not much smoke
- Your back is to an exit you can use quickly

### Remember the acronym PASS:

- P**ull the pin.
- A**im low at the base of the fire.
- S**queeze the handle slowly.
- S**weep the nozzle side to side.

*Source: National Safety Council*



### Power Line Safety "Watch Out for Power Lines!"

#### Archer Rindels, Age 7

Archer Rindels warns readers to be careful around power lines. Thank you for your picture, Archer! Archer's parents are Kyle and Rochelle Rindels, members of Sioux Valley Energy.

Kids, send your drawing with an electrical safety tip to your local electric cooperative (address found on Page 3). If your poster is published, you'll receive a prize. All entries must include your name, age, mailing address and the names of your parents. Colored drawings are encouraged.

# Delicious CHICKEN

## CHEESY CHICKEN BUNDLES

### Ingredients:

- 1 (11 oz.) can condensed cream of chicken soup
- 1/2 cup milk
- 3/4 cup Velveeta, shredded or cubed
- 1 (10 oz.) can chunk chicken, drained and flaked
- 1 (8 oz.) can crescent rolls

### Method

Combine soup, milk and cheese. Heat until melted and smooth. Pour into a 7x11 inch pan that has been sprayed with vegetable oil.

Separate crescents into 8 triangles. Place 2 tbsps. of chicken on wide end of crescent roll. Pinch to seal. Place on top of sauce.

Bake uncovered at 375 degrees for 25 minutes and until golden brown. Serve with sauce on top.

Yields eight chicken bundles or four servings.

**Janet Ochsner**  
Box Elder, S.D.

## CROCKPOT CHICKEN PARMESAN SOUP

### Ingredients:

- 3 boneless chicken breasts
- 1 tbsp. minced garlic
- 1 can crushed tomatoes (28 oz. can)
- 1 can tomato sauce (15 oz. can)
- 1 tsp. salt
- 1 tsp. ground black pepper
- 2 tsp. Italian seasoning
- 4 cups chicken broth
- 1 cup parmesan cheese (freshly shaved)
- 1 cup heavy whipping cream
- 8 oz. rotini pasta (uncooked)
- 1 1/2 cup shredded Mozzarella

### Method

Add the chicken breast, minced garlic, crushed tomatoes, tomato sauce, salt, pepper, Italian seasoning and chicken broth to the Crock-Pot.

Cover Crock-Pot with lid and cook on low for 6-8 hours.

Shred the chicken. Stir in the shredded parmesan cheese, heavy whipping cream and rotini pasta. Cover and cook on low for 30 minutes.

Top the individual soup servings with mozzarella cheese.

**Kayla Beaner**  
Centerville, S.D.

## BUTTER CHICKEN

### Ingredients:

- 4 tsps. Garam Masala blend
- 1/2 tsp. garlic powder
- 1/2 tsp. ground ginger
- 1/2 tsp. ground turmeric
- 1/8 tsp. crushed red pepper
- 4 tbsps. butter, divided
- 1 can (14.5 oz.) petite diced tomatoes
- 1 med. red onion, chopped
- 1 1/4 lbs. boneless skinless chicken breasts, cut into 1-inch cubes
- 1/4 cup heavy cream
- 1/2 tsp. sea salt

### Method

Mix Garam Masala, garlic, ginger, turmeric and crushed red pepper in small bowl. Heat large non-stick skillet on medium heat. Toast seasoning mixture 1 min. or just until fragrant, stirring constantly. Add 2 tbsps. of the butter to skillet, swirling to melt. Add onion; cook and stir 2 to 3 mins. until softened. Stir in tomatoes; cook 5 mins. Carefully transfer mixture to blender container; cover. Blend until smooth, scraping sides as needed. Return pureed sauce to skillet. Bring to simmer on med.-low heat. Add chicken; cook 8 to 10 minutes or until chicken is cooked though, stirring occasionally. Stir in remaining butter, cream and salt until well blended. Simmer on med.-low heat 2 to 3 minutes until sauce is slightly thickened. Stir in additional crushed red pepper to taste and serve with hot cooked basmati rice or warm naan bread, if desired. Garnish with fresh cilantro leaves, if desired.

**McCormick.com**

Please send your favorite recipes to your local electric cooperative (address found on Page 3). Each recipe printed will be entered into a drawing for a prize in December 2024. All entries must include your name, mailing address, phone number and cooperative name.

OCTOBER IS NATIONAL

# CO-OP MONTH

**Electric cooperatives are not-for-profit, community-led utilities. Because we are a co-op, we can adapt to our local members' needs, providing the programs and services you care about most. That's the power of co-op membership.**

Communities come in all shapes and sizes. Some are based on geographical proximity, some are based on shared interests or hobbies, and some communities can even be found in virtual spaces like social media groups. Regardless of where or how they are formed, communities can bring people together and create a sense of belonging.

Dakota Energy is deeply committed to our consumer-members, and we're glad you are part of the electric cooperative community.

This October, more than 30,000 cooperatives across the U.S. are celebrating National Co-op Month. It's a time to reflect on all the aspects that set cooperatives apart from other types of businesses, but more importantly, it's a time to celebrate the power of co-op membership.

Electric cooperatives are not-for-profit utilities that are built by the communities they serve. For Dakota Energy, our mission has always been to provide you with reliable power. We care about your quality of life, and because we are locally operated, we're uniquely suited to meet our members' evolving energy needs.

Beyond the business of electricity, our employees and directors are equally invested in our local community. Why? Because we live here, too. That's why we work hard to support local economic development projects, youth programs and scholarships, charitable giving initiatives and additional programs that make our community a better place to call home.

All co-ops are guided by seven cooperative principles that embody the values and spirit of the cooperative

movement. These seven principles are a framework to help co-ops navigate challenges and opportunities while remaining true to our purpose:

1. **Open and Voluntary Membership:** Co-op membership is open to anyone who can use the co-op's services.
2. **Democratic Member Control:** Members make decisions that shape the cooperative. Why? Because co-ops are created by the members, for the members.
3. **Members' Economic Participation:** Members contribute equitably to, and democratically control, the capital of their cooperative.
4. **Autonomy and Independence:** Co-ops are independent and can operate on their own, which ultimately benefits the members.
5. **Education, Training and Information:** Co-ops continuously focus on education to ensure employees have the training and information they need to make the co-op successful.
6. **Cooperation Among Cooperatives:** Co-ops share with and learn from other cooperatives. We help each other out in times of need because we want other co-ops to thrive.
7. **Concern for Community:** All cooperatives work for the greater good of the local communities they serve. Co-ops give back to their communities to help them thrive and grow.

This October, as we celebrate National Co-op Month and the power of membership, we hope you will recognize the many aspects that set electric cooperatives apart. Our mission is reliable power. Our purpose is people—the local communities we're proud to serve.

# JULY 2024

The Board of Directors met on Tuesday, July 23, 2024, with Directors Baum, Bonebright, Bushong, Dearborn, Nemeč, Raschke, and Schaefer present. Manager Felderman and Employees Decker, Gilbert, Hasart, Picek, Rakness, and Zomer were present. Director Baruth was absent.

## MANAGER'S REPORT

Manager Felderman reported on the following items:

- Monthly energy sales and revenue
- FERC
- Rate projection
- GHDC
- NextGen
- REED
- CRC
- Inflation and rising costs
- Annual meeting

## OFFICE SERVICES REPORT

Manager of Finance and Administration Hasart reported on the following items:

- Financial reports for June
- Budget billing
- Preliminary 2025 budget
- Unclaimed capital credits
- KRTA ratios
- Recent phone call scam reports

## OPERATIONS REPORT

Manager of Operations Zomer reported on the following items:

- Construction, maintenance and retirement activities
- Cutover underground and retired overhead by Crow Creek
- Pole changes
- Service rebuilds

- Oil samples at Dakota Provisions
- SCADA device

## MEMBER SERVICES REPORT

Manager of Member Services Gilbert reported on the following items:

- Wiring department workload
- Potential hazards
- Load control savings
- Electric presentation for Farmer's Union Day Camp
- 4-H Achievement Days high voltage trailer demonstration
- Load control receivers

## HUMAN RESOURCES/ COMMUNICATIONS REPORT

Manager of HR/Communications Decker reported on the following items:

- 2024 Health insurance cost study
- 2024 Compensation study
- Community events
- Youth tour
- First responder training

## INFORMATION TECHNOLOGY REPORT

Information Technology Administrator Rakness reported on the following items:

- Miller server room
- SCADA pilot program
- Website/Cybersecurity

## BOARD ACTION

The following items were acted upon:

- Accepted the reports presented
- Appointed Director Nemeč as the voting delegate and Director Baum as alternative delegate for 2024 Basin Annual meeting.
- Approved policies and donation.

## BOARD REPORTS

Director Nemeč reported on SDREA's June 2024 regular board meeting.

Director Raschke reported on East River's July 2024 regular board meeting.

Next monthly board meeting is September 24, 2024 at 10:00 a.m. in the Huron office.

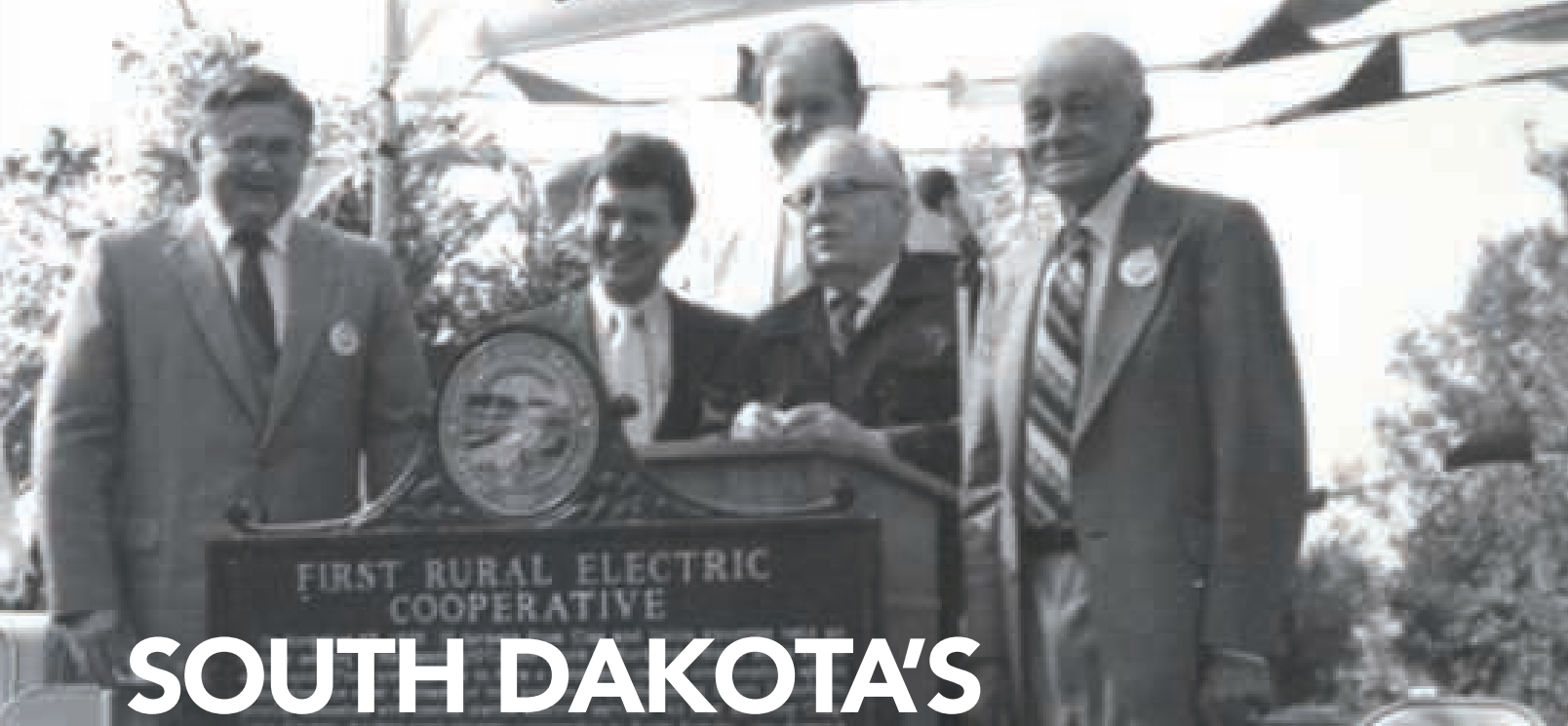
**It's Heating Season! Is Your Electric Breaker On?**

If you are on the Cooperative's electric heat rate, you have a sub-meter for your heating source. Check your heat meter breaker to ensure it is turned on inside your electric panel. The heat meter breaker must be on so Dakota Energy receives the readings. If this is off, your electric heat kilowatt-hour usage for heating will not be billed correctly at the lower electric heat rate. Remember, the electric heat rate is in effect from October 1 through April 30.

Call our dedicated Member Services Department to answer any questions you have at 605-352-8591.

### Year-to-Date Financial Report

	July-24	Year-to-Date
Total Revenue .....	\$2,173,219	\$15,242,813
Cost of Power .....	\$1,557,069	\$10,904,680
Operating Expenses .....	\$578,577	\$4,288,890
Total Margins .....	\$147,392	\$787,152
KwH's Purchased.....	22,529,066	151,222,532
Services in Place .....		3,627
Miles of Line .....		2,533
Members per Mile .....		1.43



# SOUTH DAKOTA'S COOPERATIVES

**Jacob Boyko**

[jacob.boyko@sdrea.coop](mailto:jacob.boyko@sdrea.coop)

Picture life in rural South Dakota 100 years ago. Each morning, families woke before dawn to work by the flicker of kerosene lamps, hand-pumped water to fill a gas-powered wringer-washer, and retrieved breakfast ingredients from a dripping ice box. Looming in the backs of producers' minds were fears that the market would trend downward and they may not be able to cover their debts, or even harvest their fields.

Today, South Dakota's rural farmers and ranchers enjoy virtually all of the accommodations of modern living their suburban counterparts enjoy. Past luxuries like running water, full-time electricity, internet and telephone are now standard, and many farmers enjoy stronger economic security compared to the past's tumultuous markets.

That's because for over 100 years, rural South Dakotans have pooled their resources by forming cooperatives that level out some of the disparities between rural and urban life. Thanks to members' ingenuity, rural America is not just a viable, but a thriving place to live and work.

## The First Cooperatives

The first cooperatives in South Dakota were agriculture-focused. Far too often, an

oversupply of goods led to price crashes, resulting in farmers unable to economically harvest crops or market livestock. This led to tremendous waste and crushed livelihoods.

As producers grew weary of the uncertain market, they organized to collectively market and distribute their products: they coordinated, shared risk and pooled resources.

South Dakota's earliest farm supply and marketing cooperatives started popping up a little after the turn of the 20th century. The South Dakota Secretary of State's office lists Lake Andes Farmers Cooperative, formed in 1909, as the oldest ongoing cooperative in the state.

During this early period, cooperatives operated in a legal gray area. Since producers working collectively in a cooperative setting could be viewed as monopolistic or collusive, they were under careful watch by the Federal Trade Commission as well as their larger competitors.

That changed in 1922 with the passage of the Capper-Volstead Act.

"Capper-Volstead allowed producers to come together and market their products and not be in violation of the Sherman Antitrust Act," explained Brenda Forman, South Dakota Association of Cooperatives executive director. "[Cooperatives] were not considered to be a monopoly as long as they were a cooperative association formed

Clay-Union Electric Corporation was the first electric cooperative in South Dakota.

by producers, owned by the members, one member gets one vote in cooperative elections, etc."

The presence of ag cooperatives surged in the 1930s as producers looked for stability during the Great Depression, the South Dakota Farmers Union says. With effectiveness proven, the cooperative strategy has stuck around since.

Today, there are 63 farm supply and marketing cooperatives serving over 130 South Dakota communities, Forman said.

Those same visionaries who established the first ag cooperatives identified another need that was not being met. Using the same cooperative model that changed their lives once already, farmers would bring power to the prairie.

## Electricity

Before energy infrastructure was widespread, many small towns in South Dakota relied on local power plants. However, with distribution lines only serving the city, living even a mile or two out of town was the difference between flipping a light switch and carrying a lantern.

Despite requests from farmers to run lines to their homes – some of whom even offered to pay installation costs – most municipalities and investor-owned utilities (IOUs) refused because undertaking the effort didn't lead to any meaningful profit.

Even many of the state's elected representatives seemed resigned to the idea



that the future of energy for their farming constituents was tied to on-site generation, like the modest Delco–Light plants that could power a few small appliances and light bulbs. To them, it seemed laughable that there was any feasible way to run lines in a state where the service would average out to a sparse 2.2 customers per mile of line, and for many, that was the end of the conversation.

The narrative changed when President Franklin D. Roosevelt expanded his New Deal programs to modernize rural America, creating the Rural Electrification Administration (REA) to finance ambitious projects.

The profit-minded IOUs were largely uninterested in expanding into sparse territory for mealy returns, and little progress was made toward Roosevelt's vision.

In 1936, once it was apparent IOUs wouldn't be making the foray into rural territories as farmers had hoped they would, Roosevelt signed the Rural Electrification Act. Now, cooperatives could organize and receive REA loans while the IOUs idled.

A group of 17 farmers from Clay and Union counties jumped at the opportunity to finally bring their homes into the modern age. Just months after the REA was established, and at a time when just 5% of South Dakota farms had power, the group hatched out a plan to secure an REA loan for their newly-formed Fairview Rural Electric System, today Clay-Union Electric Corporation.

Going door to door and collecting \$5 sign-ons from neighbors ranging from ecstatic to skeptical, the cooperative finally got the REA's green light and received a \$70,000 loan to build 67 miles of line that would serve about 300 members, according to a 1936 Argus Leader report.

The success of South Dakota's first electric cooperative brought hope to still more than 90% of South Dakota farmers without power. It wasn't long before dozens more newly-formed cooperatives were each going door to door collecting sign-on fees to secure their own REA loans.

## Serving Everyone

In 1946, roughly 10 years after the state's first electric cooperative debuted, rural farmers and ranchers from the state's

remote northwest corner met in Lemmon to form their own cooperative. The board understood securing a loan from REA to serve such a vast and sparse territory would be a big ask, so they opted to charge members a \$10 monthly minimum, which was twice the minimum rate of most South Dakota cooperatives, and equal to about \$170 today.

Even so, would-be members agreed to the terms of the longshot project and paid their \$5 membership fee. Despite federal hesitation about the feasibility of such a project, the REA loan was approved.

Grand Electric Cooperative received more than \$1.8 million over two loans that would build 1,127 miles of line and serve 948 members. The investment amounted to one of the REA's largest and riskiest yet in the state, but proved to be a success.

Cooperative members did the impossible; the wires in northwest South Dakota had finally been energized. Board members then eyed another ambitious goal – bringing telephone to Northwest South Dakota.

West River Cooperative Telephone Company was formed as a separate entity, but in the spirit of cooperation, the telephone and electric cooperative would be jointly operated. The two would, and still to this day, share a building, staff and infrastructure.

“Up here, we cover almost 8,000 square miles and have 4,000 miles of wire, but we only have 1,800 members,” explained Eric Kahler, the cooperatives' joint general manager. “When you look at the economics of this type of service territory, if you're in the business to make money, you're not going to be too successful here. The cooperative model is really the only model that could work here.”

And the community knows that fact and is grateful for their cooperative, says Patricia Palmer, who has spent much of her last 63 years working in Grand Electric and West River Telephone's member services.

“They're thankful,” she said. “Very thankful. We have a terrific telephone work crew and line department. At times, they work tirelessly in horrible weather conditions... You can't believe the thank you notes that we get.”

Growing up on a farm near McIntosh, Palmer has a firsthand account of the impact

of cooperatives. And she says it's one she will never forget.

The night she watched her family's farmhouse light up for the first time was also the beginning of a new chapter, she recalled. A chapter with an automatic washer, a refrigerator and a toaster.

As times change, cooperatives continue to be at the forefront of bringing service that might otherwise be out of reach.

“When I came to the cooperative, it was just telephone and electricity, and now we have high-speed internet and TV,” Palmer said. “Over the years, the cooperative has really grown!”

## Other Applications

The cooperative model is also used in many other sectors; there are 34 South Dakota credit unions that offer member-owners better interest rates and reduced fees compared to for-profit banks.

Even some rural water systems, while not wholly cooperatives themselves, borrow some of the cooperative fundamentals to make serving large areas more practical.

“Cooperatives are pretty significant in the impact they've had,” Forman said. “And the other cooperatives we have – there are daycare co-ops, food co-ops, education co-ops – there's a number of different structures that the cooperative model has been used for, because of that ownership and one member, one vote.”

Today, there are 141 cooperatives in the state, providing more than 78,500 jobs, \$2.8 billion in worker salaries and \$3.9 billion in gross domestic product (GDP), according to a South Dakota State University study titled *The Economic Impact of Cooperatives in South Dakota*.

That means cooperatives contribute almost 13% of South Dakota jobs, more than 11% of salaries, and 6.2% of the state's entire GDP.

“In a cooperative, your board is local,” Forman said. “[The co-op board and employees] support and participate in sports functions, 4-H barbecues, you may go to church with them, or they may be at family dinner. Which means when something is a concern or challenge, you have somebody to go to and you have contacts close that know you and understand the system.”

## RISING COSTS



### Rising costs of purchased power, along with materials and equipment will mean an increase in the electricity rates.



**Eric Hasart**  
Manager of Finance and Administration

While electricity has remained in a cost-steady environment in recent years, Dakota Energy is expecting a rise in wholesale power costs in 2025 and beyond. This does not come as a surprise as we have all experienced dramatic increases in inflation, interest, and labor.

Electricity has become such a constant in our daily lives that we often take it for granted. Dakota

Energy strives to have reliable and affordable energy served to our members. As we enter budget season, we are anticipating a rate increase for 2025. While the amount of the rate increase is still unknown, it will become clearer once we get electric rates from East River Electric and finalize our budget for 2025.

The cost of electricity can vary due to supply and demand, infrastructure investment, and operation and maintenance expenses. Weather can also be a factor, affecting demand and generation capabilities. Extreme changes in weather conditions lead to increased energy use and disruption. Government policies, such as subsidies for renewable energy or taxes and regulations on power plant emissions influence electricity costs as well. Dakota

Energy considers all these aspects when adjusting rates because we care about the impact the costs have on our members.

As you see in your everyday life, the cost of goods and services continues to rise, which is also a challenge for Dakota Energy. We have seen the costs of material and equipment such as wire, transformers, and metering increase considerably over the last three years. Inflation also makes it challenging to replace aging infrastructure, which is essential to keep consistent, reliable power available for our members.

We hope this information helps you better understand a couple of factors that affect electricity rates. While many factors affect rates, the cost of wholesale power remains our largest single expense, just under 75 percent of all expenses. While we can't control the weather and rising costs of equipment and material, Dakota Energy is doing all the things possible to keep costs low. We thank you for your continued support.



## Energy Assistance Available

Are you or someone you know having difficulty paying home heating bills? If so, there is a federal program that could help.

The Low-Income Energy Assistance Program (LIEAP), administered by the South Dakota Department of Social Services, helps eligible South Dakotans pay for home heating costs. Energy assistance may not pay for all of your home heating costs, but can help.

The program helps eligible households with home heating costs by paying the energy supplier directly. If you are eligible for energy assistance, the benefit amount you are approved for will be applied to any unpaid heating charges from regular meter read dates from October 1 through April 30.

### WHO IS ELIGIBLE?

Eligibility for the program is based on:

- Number of people in the household
- Gross income of everyone in the household
- Your home's main heat source type
- County which you live

You must pay any bills that are not covered by LIEAP.

### HOW DO I APPLY?

There are several way to apply:

- E-mail LIEAPApp@state.sd.us to either request an application or e-mail a completed application
- Call toll-free at 1-800-233-8503 to request an application be mailed to you
- Visit <https://www.sd.gov> and search for energy assistance application
- Visit your local Department of Social Services office to obtain an application.

If you are approved, you will receive a notice by mail with the benefit amount you are eligible to receive.

For more information contact the Office of Energy Assistance at 1-800-233-8503.



## Open Board Position

The Board of Directors is looking for Dakota Energy members from the Ree District (Hand County and Hyde County) who are interested in filling a vacancy on the Board. Interested members are encouraged to call the office to ask about the position and to confirm eligibility under bylaws.

**The deadline is Tuesday, September 17th**

# GHOST TOWNS

## South Dakota's History Remembered

Jacob Boyko

[jacob.boyko@sdrea.coop](mailto:jacob.boyko@sdrea.coop)

Scattered across open fields and through narrow mountain gulches, a careful eye can spot many of South Dakota's nearly 250 long-lost prairie villages and prospecting towns.

Many of these communities were once thriving outposts, railroad hubs, farming villages and mining towns, but were dealt their final blows by the hardships of the dust bowl, changes to railroad systems and the depletion of natural resources.

Most of the towns are long forgotten, their existence marked only by the rotted shell of an old wood barn or a crumbling foundation poking up from the ground.

Thanks to the work of local historical societies who have pieced together the history of the communities' "booms and busts" through old newspaper clippings, plat maps and land records, we can get a glimpse into the lives of the first rural South Dakotans and learn about the communities that once bustled with life.

### Galena

Unique among a cavalcade of abandoned Black Hills gold-rush towns, Galena's roots are in its silver. The town was settled in the late 1870s after prospectors Patrick Donegan and John F. Cochran discovered layers of lead and silver ore near Bear Butte Creek while searching for gold deposits.

The U.S. government removed the two men from the area in accordance with Native American treaties. However,

their exile turned out to be short-lived. Donegan and Cochran returned shortly after to mine their claim as more and more gold-hungry settlers tested the increasingly unenforceable treaties.

The claim, which would later become the Sitting Bull mine, turned out to be a mother lode, according to Galena Historical Society member Jeff Jacobsen.

Over the next several years, other mining operations popped up in the gulch as the miners' families made Galena their new home. The town soon had multiple houses, a hotel, restaurant, stores, a catholic church, cemetery and school, attracting new settlers through its peak between 1881 and 1883.

Arriving from Chicago in hopes of expanding his fortune, Col. John Davey soon became a Galena mining heavyweight, buying up claims along the Bear Butte Creek, including the Sitting Bull claim.

Davey's more than 125-man operation was running smoothly until trouble arose from a claim dispute. The owners of the nearby Richmond claim suspected Davey was digging too far into the hill and mining their silver. Davey claimed he was following the path of the ore, which according to mining law, he was allowed to follow onto another claim. The Richmond claim owners said the law didn't apply to a horizontal blanket formation of ore, like the one in Galena.

A lengthy court battle ensued, and the judge shut down the Sitting Bull mine

until the ruling. Galena was suspended in controversy as many of the townsfolk found themselves out of work.

Thus began Galena's rocky "boom and bust" cycle, Jacobsen explained.

"The boom time was when Col. Davey and other mines were producing, and then the lawsuit shut that down and you have a bust," he said.

The judge ruled against Davey, and the operation never recovered. Galena would never again be the bustling town it was in the early 1880s.

"In 1892, some more people came into town and tried to start up again, so that was a boom, and then they went bankrupt, so there's a bust," Jacobsen continued. "There's like three or four cycles like that in Galena."

By the mid 1930s, the town had seen its final bust. The mining wasn't comparable to the riches of the past, and interest in the gulch slowly started to fade. The tracks were removed and the school house closed in 1943.

Today, Galena is the best-preserved Ghost Town in South Dakota. On the second Saturday of each June, visitors can tour the town, visit the maintained graveyard and go inside the newly-restored schoolhouse, courtesy of the Galena Historical Society.

"It just kind of stands out," Jacobsen said. "Galena is just one of the very few silver mining areas in the Black Hills when almost everyone else was trying for gold."



Galena School  
Photo Credit: Galena Historical Society

## Did You Know

In 1947, Deadwood resident Ollie Wiswell came across an orphaned coyote pup while he was out on a hike. He gave the pup, named Tootsie, to Fred and Esther Borsch of Galena. Tootsie gained fame as the mascot for the Borschs' Deadwood liquor store, famously appearing on the store's sign. Fred taught Tootsie to howl along to his singing, and the two recorded the album "South Dakota Tootsie."

Tootsie, at this point a South Dakota mascot, rode through parades, was featured in an airline advertising campaign, and even embarked on a nationwide tour where she visited the White House and performed for President Dwight D. Eisenhower and Vice President Richard Nixon.

Gov. George Mickelson, a fan of Tootsie himself, signed legislation in 1949 making the coyote the state's official animal. Tootsie died in 1959 and is buried near her home in Galena.

## Argonne

About nine miles northwest of Howard, just off state Highway 25, lay the remains of the ill-fated farming community, Argonne.

Marked by a blue historical sign, travelers-by can catch a glimpse of the town's massive cement bank vault with its swinging iron door, an old silo bearing the town's name, several concrete foundations, and a house falling into its own footprint.

The town's founder, Dr. Louis Gotthelf, was a Prussian-born physician who emigrated to the United States in the aftermath of the Prussian revolution. Gotthelf staked his claim in 1881 and established the townsite in 1886.

The town was originally called St. Mary's, named after Gotthelf's daughter, and was strategically positioned along the Chicago and North Western railroad, with the streets running parallel to the railroad rather than the traditional east-west layout. Confusion with another St. Mary's led to the residents voting to change the name to Argonne in 1920, which was chosen to honor local soldiers who had served in the Meuse-Argonne Offensive during World War I.

Despite having what should have been a prime location, Argonne failed to grow to Gotthelf's satisfaction, and he left with his family for Parker in 1889.

A 1919 land boom in South Dakota finally turned things around for Argonne, Miner County Historical Society member George Justice Forster said.

"Most of the growth that happened initially was when it kind of took off as a

trade center," he explained. "Suddenly the town had a railway depot, lumberyard, farmer's cooperative and general store."

In the early 20s, Argonne's population boomed to about 100 residents, and the town offered new amenities including a school, blacksmith and post office.

Argonne's peak was short-lived, and by 1930 the population had fallen to about 65 residents.

When Doug Jerlow moved to town in 1953, much of what was built in the town's prime was left abandoned, and most of the businesses that did remain were struggling.

"It was past the peak," Jerlow recounted. "One general store closed when the post office inside it closed, and that was an elderly lady who ran that and lived in a house by herself. The Haxby family's store was open for maybe a year or two after that."

Though the town was facing a bleak outlook, there remained one huge point of pride for Argonne: high school basketball.

Delbert Gillam, also known as the

Argonne Ace, led the Argonne Arrows to a 10-1 start in his junior year in 1953. Gillam also broke the state record for the most points scored by a player in a single game, making 31 field goals and 10 free throws, scoring 72. Argonne still holds this record.

The high school closed in 1956, but the community limped on for a few more years before the grade school closed in 1970 when the railroad picked up and left.

Doug Jerlow's family, the last residents of Argonne, left town that same year.

Jerlow pointed out that while many other communities along the rail line like Unityville, Canova, Carthage, and Esmond struggled to recover from the abandonment of the line, for Argonne, it was the death blow.

Now, Forster and other members of the Miner County Historical Society are working to preserve the history of Argonne.

A historical marker will soon be placed east of Argonne on state Highway 25 that will tell the story of Argonne from its founding to its final household.

Though Jerlow now lives near Madison, he still farms near Argonne and owns most of the former townsite. As the unofficial mayor of Argonne, as Jerlow sometimes calls himself, he wants to keep the memory of his childhood hometown alive.

"It was just a nice community to grow up in," he said. "Those small communities, I think it's becoming harder to find them anymore."



Argonne Arrows  
Photo Credit: Miner County Historical Society



# RELIABLE ENERGY

## How the EPA's Power Plant Rule Jeopardizes Grid Reliability

**Jocelyn Johnson**

[jocelyn.johnson@sirea.coop](mailto:jocelyn.johnson@sirea.coop)

The energy future outlined by the U.S. Environmental Protection Agency's Power Plant Rule means more blackouts, greater uncertainty and higher electric bills. This is the concern of electric cooperatives and other industry leaders who are in litigation with the EPA over the legality of the power plant rule issued in May of this year.

"The administration and the EPA specifically have made it a priority to undertake a 'death by a thousand cuts' approach to regulating the utility sector," said Stephen Bell, National Rural Electric Cooperative Association's vice president of advocacy, press and member communications. "They've enacted a number of rules, including the EPA Power Plant Rule. As a result, they're proposing rules and regulations at a

rapid pace that have a direct impact on our industry specifically."

Boiled down, the EPA's Power Plant Rule requires coal-fired and natural gas power plants to capture 90% of carbon dioxide emissions using carbon capture and sequestration technology by 2032. This is not attainable according to NRECA who represents electric cooperatives nationally.

Alongside other industry leaders and 27 states' attorneys general, NRECA filed a lawsuit and stay request in the D.C. Circuit against the EPA earlier this year. The stay request, which attempted to delay the implementation of the rule, was denied in July and an appeal was immediately made to the U.S. Supreme Court, arguing that

the Clean Air Act's Section 111 requires EPA's standards be based on technology that has been adequately demonstrated. A system that meets all of EPA's requirements has never existed and therefore cannot be considered adequately demonstrated.

"No operating coal or natural gas power plants in America exist that use carbon capture at the scale that would comply with EPA's regulation," said Bell. "Their final rule is unreasonable, unrealistic and unachievable, because it relies on technology for implementing greenhouse gas reductions that just isn't ready for prime time."

Grid reliability is a concern for many in the energy industry – including local distribution cooperatives whose mission is to provide safe, affordable and reliable energy to member-consumers.

"The numbers don't add up," said Bell. "I think we are in a situation where reliability is being put at risk

by a policy that doesn't focus on the importance of keeping the lights on."

South Dakota Rural Electric Association's General Manager Steve Barnett added the same sentiment, acknowledging that the timing of the power plant rule was troubling.

"At the same time the EPA is leading our nation down the path to fewer power plants, utilities are facing a surge in electricity demand – driven by the onshoring of manufacturing, the growth of the American economy and the rapid expansion of data centers to support artificial intelligence, e-commerce and cryptocurrency," said Barnett.

Grid reliability affects everyone's ability to turn on the lights, heat their homes and use electric appliances. However, the future of grid reliability does not have a positive outlook for many in the energy industry.

As it stands, the EPA's rule would cause debilitating pressure on an already strained grid. It would also

have a potential impact on consumer costs.

"When demand is high and supply is low, costs go up," Barnett said. "We're concerned about threats to reliability as well as cost increases to our members."

This growing demand – and shrinking supply – is why the North American Electric Reliability Corporation has warned that 19 states could see rolling blackouts over the next five years during times of high electrical usage, including during life-threatening cold snaps and heat waves.

"Demand for power is increasing and supply is not keeping up," said Bell. "Against that backdrop, the EPA has proposed a rule that will force electric co-ops to take power plants offline. They will be forced to do more with less in a situation where we need more. This is not a recipe for success."



**SEPT. 14-OCT. 27**  
**Mazing Acres Fall Festival**  
10 a.m. to 6 p.m.  
30851 433rd Ave.  
Yankton, SD  
605-760-2759



**SEPT. 27-29**  
**Coal Springs Threshing Bee and Antique Show**  
Meadow, SD  
605-788-2299

**OCT. 4-5**  
**Holman Acres Pumpkin Fest and Vendor Show**  
Philip, SD  
605-441-1060

**OCT. 4-5**  
**25th Annual Pumpkin Fest**  
Webster, SD  
<https://webstersd.com/home>

**OCT. 5-6**  
**Run Crazy Horse Marathons**  
Crazy Horse  
605-390-6137  
[www.runcrazyhorse.com](http://www.runcrazyhorse.com)

**OCT. 5-6**  
**Magic Needlers Quilt Show**  
Codington County Extension Complex  
Watertown, SD  
605-881-3273

**OCT. 5-6**  
**The Black Market**  
W.H. Lyon Fairgrounds  
Sioux Falls, SD  
605-332-6004

**OCT. 6**  
**Giant Pumpkin Festival**  
Bentley Memorial Building  
Bison, SD  
Enter Pumpkins by 11:30 a.m.  
605-244-5475

**OCT. 10-11**  
**Rural Women in Agriculture Conference**  
Oct. 10 from 1-9 p.m.  
Oct. 11 from 7 a.m.-3 p.m.  
The Lodge of Deadwood  
Deadwood, SD  
[SouthDakotaWomeninAg.com](http://SouthDakotaWomeninAg.com)

**OCT. 11-12**  
**Junkin' Market Days**  
Ramkota Exhibit Hall  
Sioux Falls, SD  
605-941-4958

**OCT. 19**  
**Buffalo County Fall Ball**  
Live Music and Food  
8 p.m.  
Fire Hall  
Gann Valley, SD

**OCT. 25-27**  
**Forest of Fears Haunted Trail**  
7 p.m.-10 p.m.  
Reclamation-Ranch  
40787 259th St.  
Mitchell, SD

**OCT. 26**  
**Hill City Children's Boo Bash and Pumpkin Festival**  
Hill City, SD  
605-574-2368

**OCT. 26**  
**Hartford Women of Today Fall Craft Fair**  
9 a.m.-3 p.m.  
West Central Becker Center  
Hartford, SD  
605-359-2049

**OCT. 26**  
**Owl-O-Ween**  
Noon-5 p.m.  
Black Hills Raptor Center  
Caputa, SD  
605-391-2511

**OCT. 31**  
**Treat Street**  
5:30 p.m.-7 p.m.  
Main St.  
Milbank, SD  
605-432-6656  
[MilbankSD.com/Chamber](http://MilbankSD.com/Chamber)

**NOV. 2**  
**Fall Fling Craft Show**  
10 a.m.-2 p.m.  
Dakota Christian School  
Corsica, SD  
605-366-7940

**NOV. 2**  
**Reliance Christmas Carousel**  
9 a.m.-3 p.m.  
Legion Hall  
Reliance, SD  
605-730-0553

**NOV. 22-23**  
**Holiday Arts Christmas Craft Show**  
Davison County Fairgrounds  
Mitchell, SD  
605-359-2049

**NOV. 30**  
**A Hometown Christmas Market**  
2 p.m.-6 p.m.  
Main St.  
Elk Point, SD

To have your event listed on this page, send complete information, including date, event, place and contact to your local electric cooperative. Include your name, address and daytime telephone number. Information must be submitted at least eight weeks prior to your event. Please call ahead to confirm date, time and location of event.

**Note: Please make sure to call ahead to verify the event is still being held.**